

# CERTIFICATE OF LOCATION OF GOVERNMENT CORNER

NORTH QUARTER Corner of Section 28, Township 108, Range 41, 5TH P.M.

STATE OF MINNESOTA, County of MURRAY

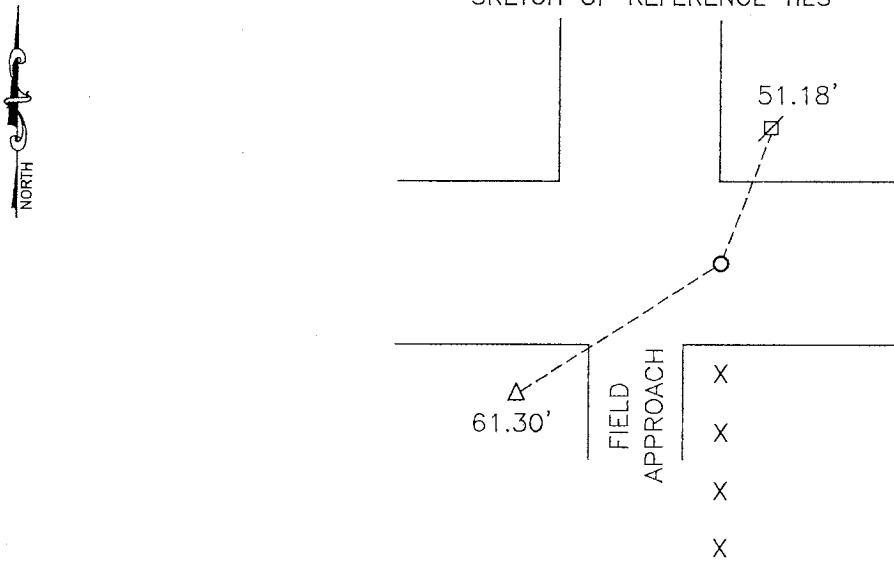
At the corner location shown on the sketch:

On 07-08-2010 found a PK NAIL  
DATE

left monument as found,  lowered monument,  removed monument (explain)

On 07-08-2010 placed a SURVEY SPIKE WITH SEAL #43844  
DATE

### SKETCH OF REFERENCE TIES



Minnesota State Plane Coordinate  
System Murray County Datum  
NAD83 (1996)  
N: 205769.180  
E: 498016.657

Nail and bottle cap in utility pole NE 51.18'  
Top center of telephone pedestal SW 61.30'

Statement of evidence relative to this corner location is on back of page.

I hereby certify that this document and the data contained herein was prepared by me or under my direct supervision.

*James V. Johnson* 1/12/11  
SIGNATURE DATE

Registration No. 43844

Land Surveyor,  Professional Engineer  
 County Surveyor,  County Engineer

OFFICE OF THE COUNTY RECORDER  
County of \_\_\_\_\_

I hereby certify that this document was filed in the Co. Recorders office at \_\_\_\_\_ .M on the \_\_\_\_\_ day of JAN 18 2011 A.D. 20 \_\_\_\_\_

County Recorder *James V. Johnson*  
By \_\_\_\_\_, Deputy

DOCUMENT NO. \_\_\_\_\_

## Statement of Evidence

In 1861, L.G.M. Fletcher did the original subdivision of the township.

On April 4, 1972, the Murray County Highway Department found a concrete monument. They set a steel pin over the monument.

On November 16, 1998, the Murray County Highway Department set a PK nail over the monument.

On July 8, 2010, Bueltel-Moseng Land Surveying found a PK nail at the corner. We removed the PK nail and set a survey spike with seal #43844 in its place.